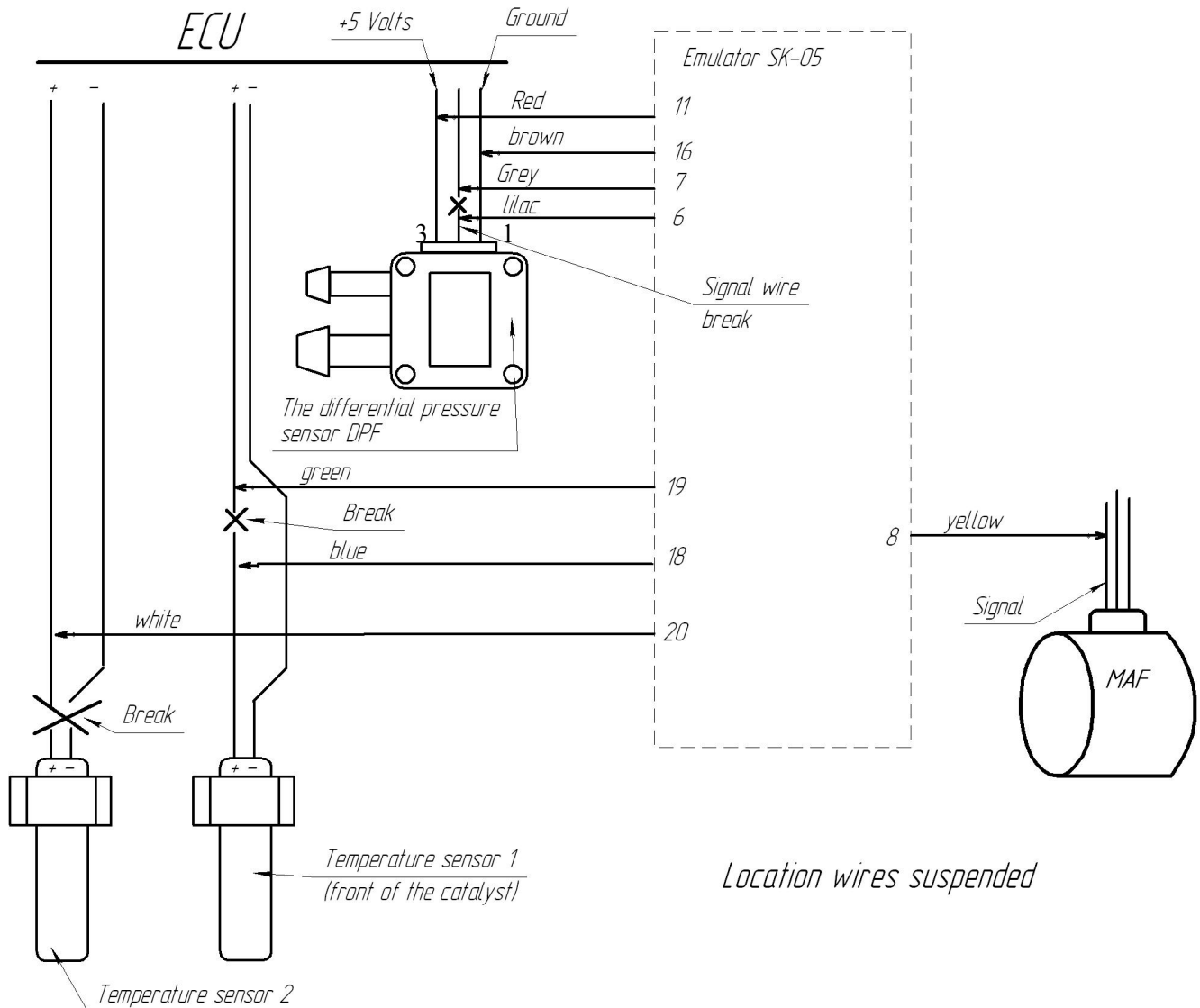


## Installation instructions for TOYOTA D4-D 2.5, 3.0, 4.0 (Engines 1KD-FTV, 2KD-FTV)

Correct and error-free operation of the particulate filter emulator is guaranteed only in case of properly functioning flow meter and properly functioning 1<sup>st</sup> temperature sensor of the particulate filter. Place the emulator interior or under hood. Keep the emulator away from water.

### Connection:

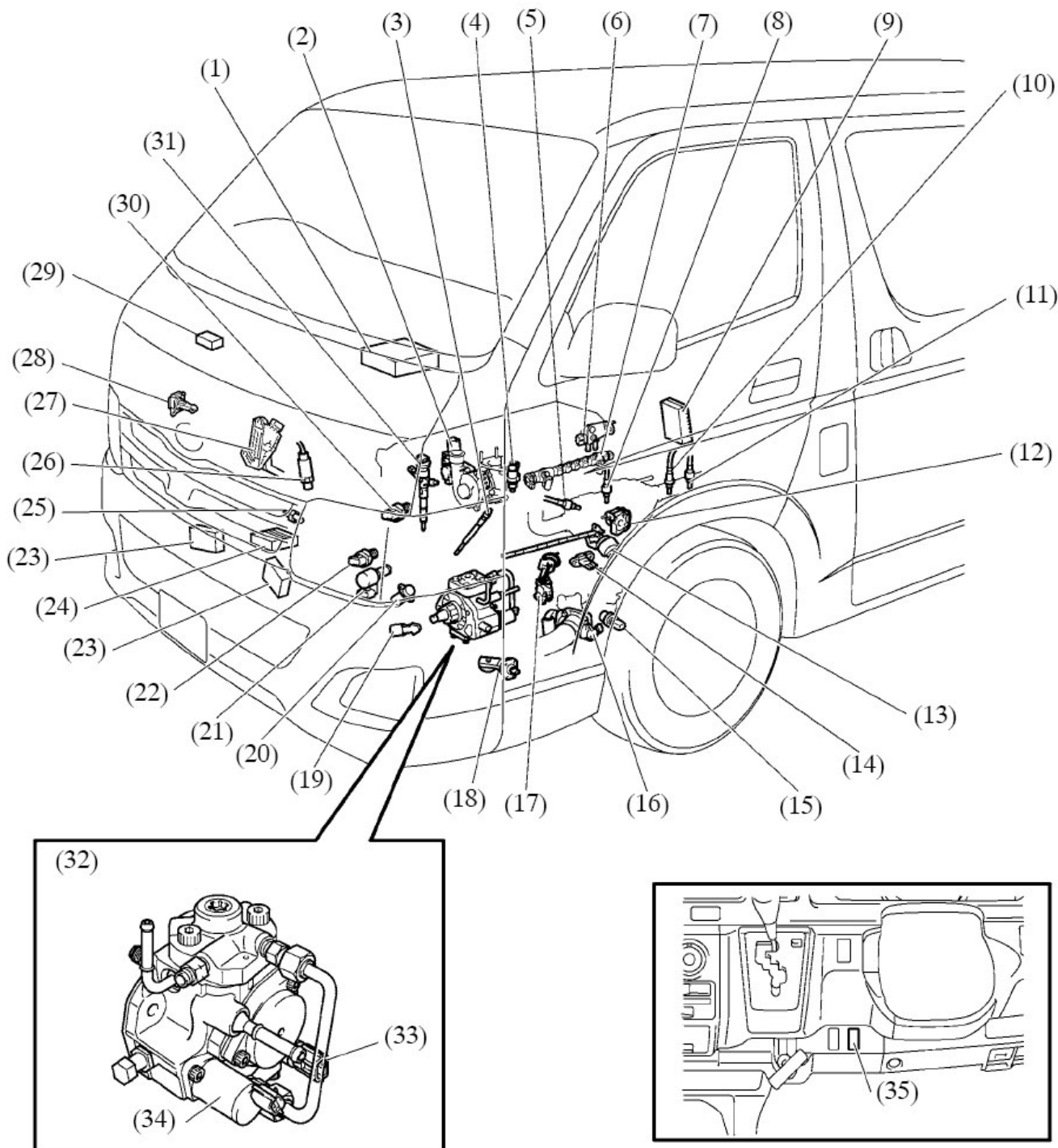


The yellow wire is connected to pin MAF №5.

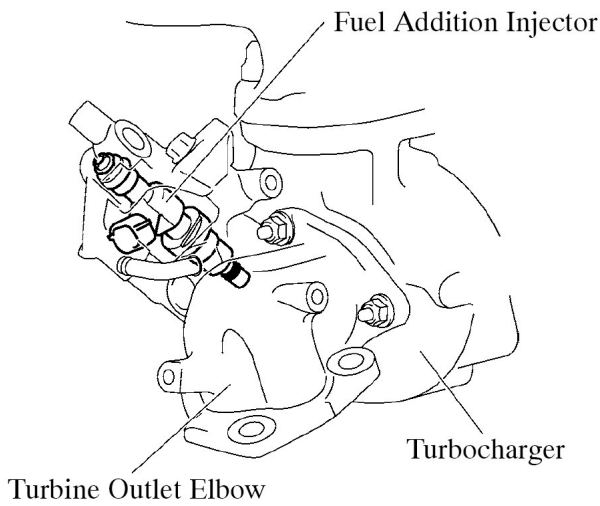
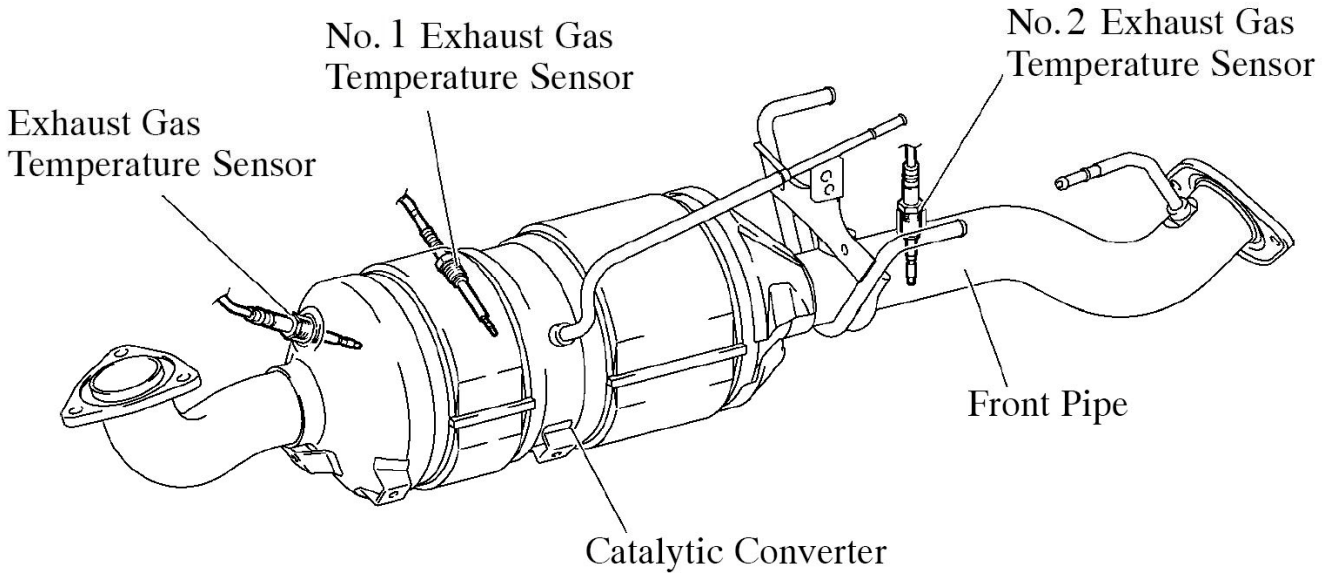
**In order the emulator to operate properly, the temperature sensors should be in the exhaust stream, but not away from it. Usually they use native case of the particulate filter. It is not necessary to remove the catalyst.**

### Additional nozzle

There is additional nozzle in Toyota D4D that operates during filter regeneration. It is necessary to disconnect this nozzle and instead of the 5<sup>th</sup> nozzle to connect the resistance of 5W 10 – 20 Om.



1. ECU
4. Exhaust fuel addition injector
- 5, 6. Exhaust gas temperature sensor (emulator does not connect)
8. Exhaust gas temperature sensor №1
10. Лямбда зонд (emulator does not connect)
11. Exhaust gas temperature sensor №2
28. MAF



### Adjustment

After installation of the emulator, it is necessary to eliminate all errors.

After elimination of the errors perform the trial run.

During run along the route the temperature should not be more than 650 degrees. In case of noncompliance, please contact the supplier.

