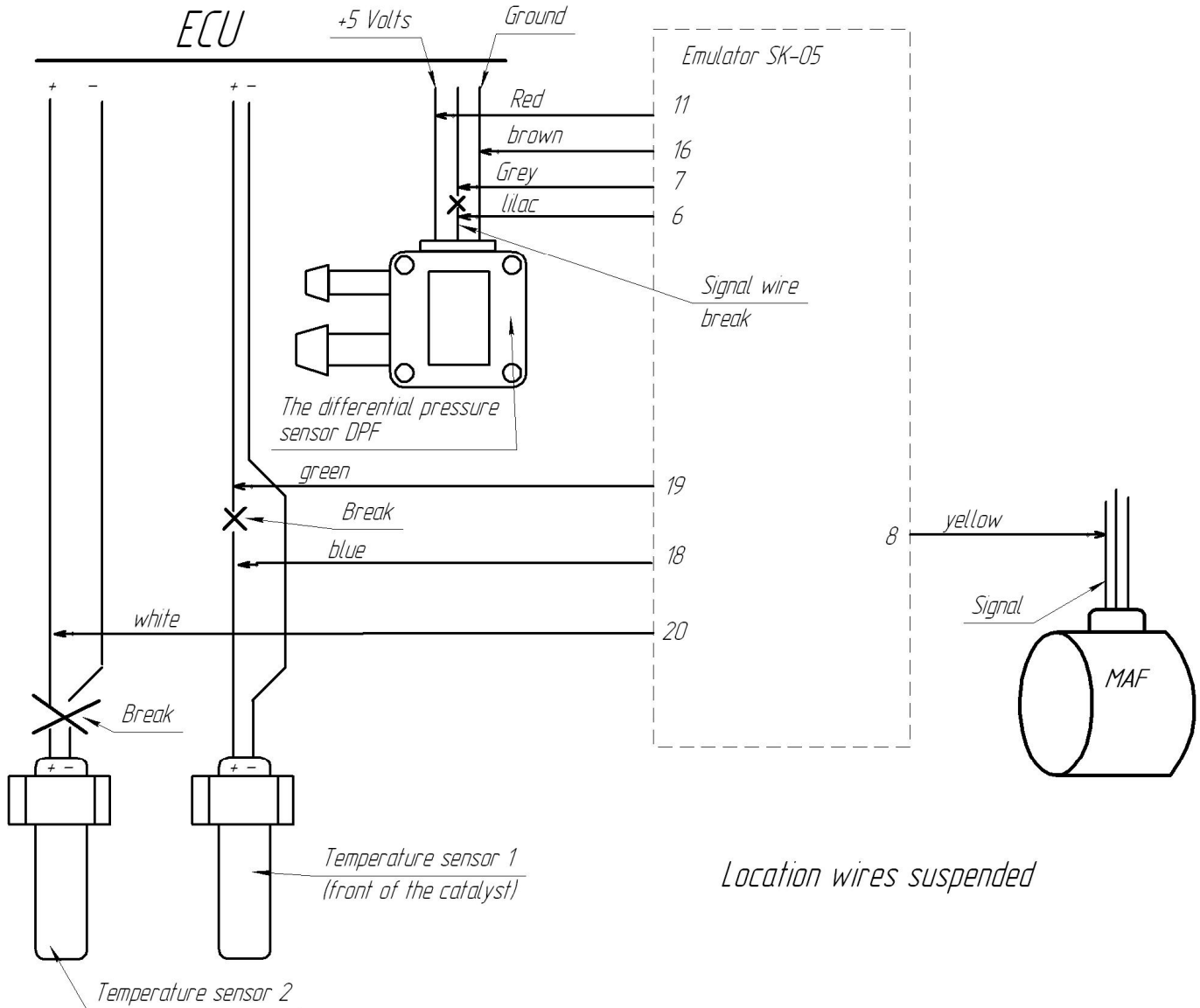


Installation instructions for TOYOTA 2.0, 2.2

Correct and error-free operation of the particulate filter emulator is guaranteed only in case of properly functioning flow meter and properly functioning 1st temperature sensor of the particulate filter.

Place the emulator interior or under hood. Keep the emulator away from water.

Connection:



In Toyota/Lexus the yellow wire is connected to signal wire of the flow meter. The voltage of signal wire should change with change of engine speed:

in the Flow meter No. 22204-27010 to the leg No. 1 (old engine 2.0 D4D D-CAT)

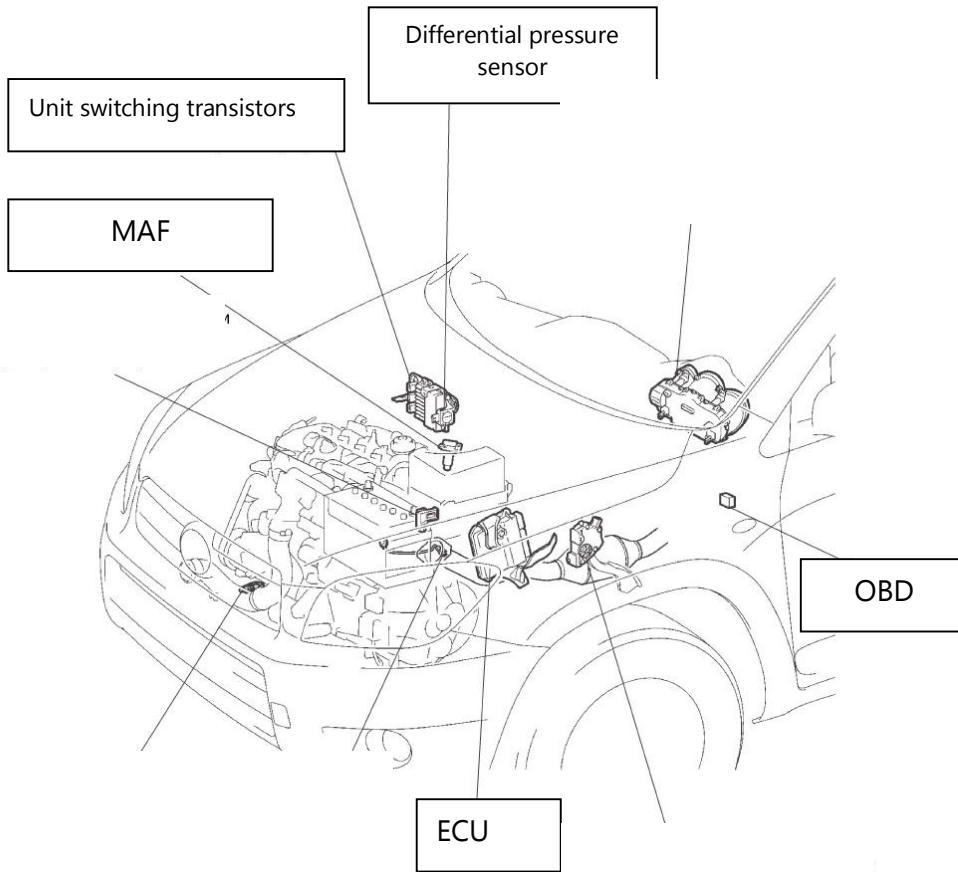
in the Flow meter No. 22204-0N010 to the leg No. 3 (new engine 2.0 D4D D-CAT or 2.2 D-CAT)

If after installation the error P2002 appears, connect the ends of the sensor No. 2 to the sensor No. 1 (turn them on in parallel).

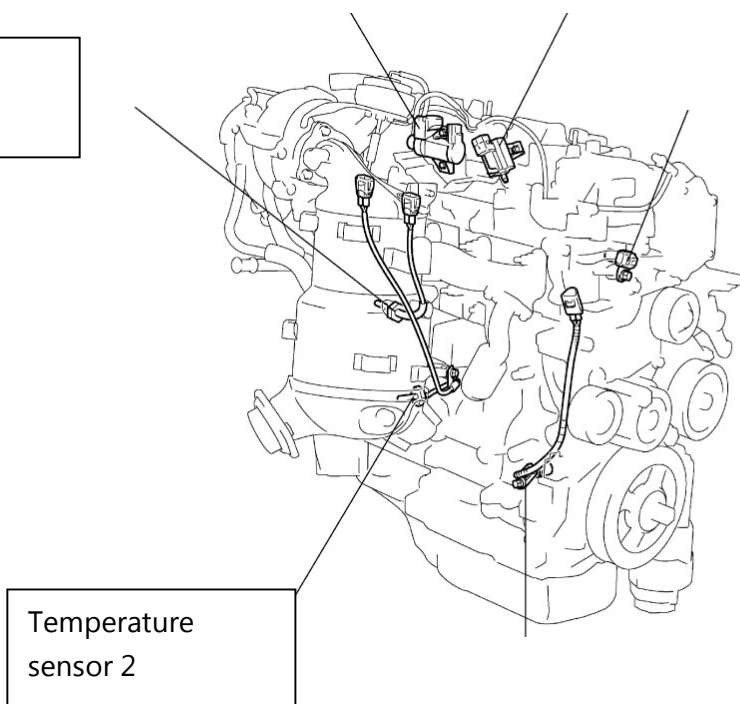
In order the emulator to operate properly, the temperature sensors should be in the exhaust stream, but not away from it. Usually they use native case of the particulate filter. It is not necessary to remove the catalyst.

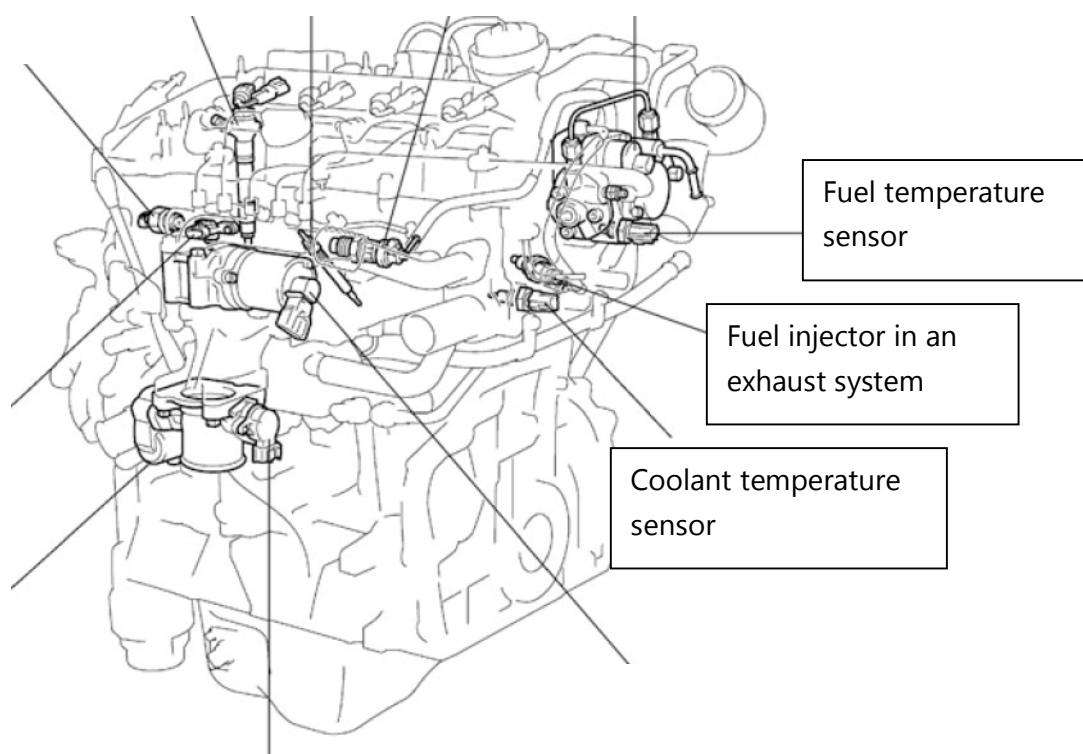
Additional nozzle

There is additional nozzle in Toyota D-CAT and D4D that operates during filter regeneration. It is necessary to disconnect this nozzle and instead of the 5th nozzle to connect the resistance of 5W 10 – 20 Om.



Temperature sensor 1





Adjustment

After installation of the emulator, it is necessary to eliminate all errors.

After elimination of the errors perform the trial run.

During run along the route the temperature should not be more than 650 degrees. In case of noncompliance, please contact the supplier.